



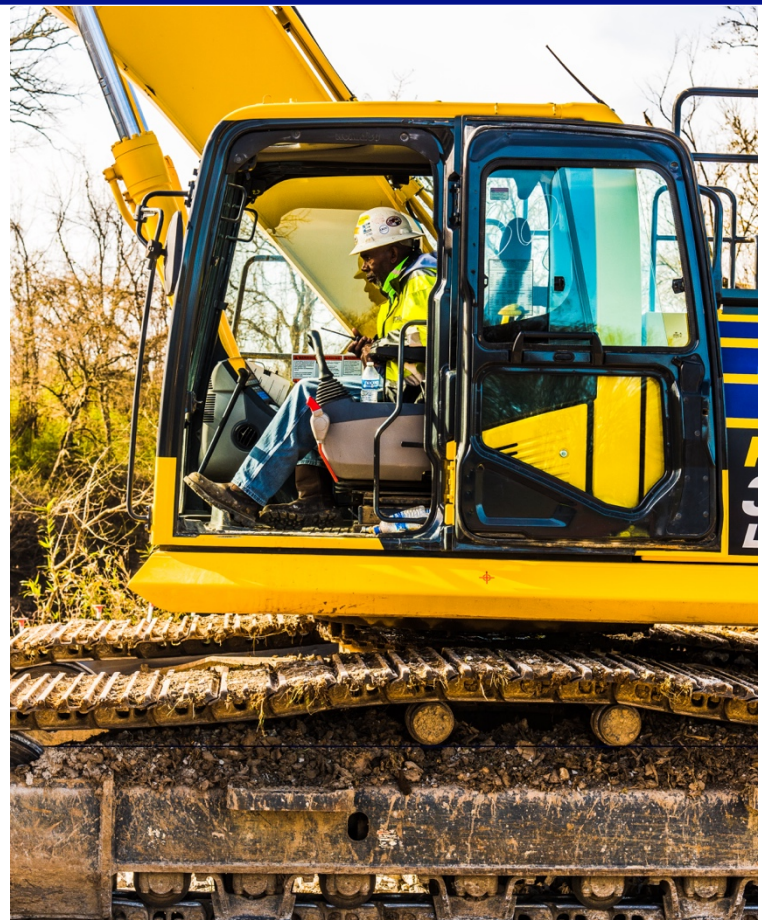
EUTAW UNIVERSITY

What is Eutaw U?

Eutaw U is a 6-week program designed to help put new industry talent on the fast track to success in the construction industry and to create a future workforce prepared for the growing demands in the construction industry.

Who are we looking for?

Eutaw is looking for dependable, hard-working, self-motivated high school seniors with great attitudes who are ready to jumpstart their careers and become a member of our team. Spots are limited.*



Who is Eutaw Construction?

Eutaw Construction Company, Inc. was founded in 1980 and is named for the strong Eutaw clay prevalent in Northeast Mississippi. Since its founding in 1980, the Company's heavy equipment fleet has grown to an approximate appraised value of \$35 million, and the company is now an employee-owned company. Eutaw employs over 400 salaried employees, comprised of management, division personnel, field supervisors, foreman, operators, and skilled laborers. Eutaw's experience in the industry includes the construction of hundreds of miles of state and federal highways, utility projects, large-scale site construction, demolition, and disaster relief. Eutaw is licensed or has performed work in Alabama, Arkansas, Florida, Georgia, Louisiana, Mississippi, North Carolina, Oklahoma, South Carolina, Tennessee, and Texas. The Company's corporate headquarters is in Madison, Mississippi, and it has regional offices in Aberdeen, Mississippi, Petal, Mississippi, and Franklin, Tennessee.

The national average of **college tuition alone is**

\$9,970 per year.

Adding books, room and board, and other fees can raise that price tag upwards of **\$25,000!**

Eutaw U is a free apprenticeship program that offers a path to a career in high demand **AND** that pays well!



Eutaw U Apprenticeship vs. College

By the time college students graduate with a mountain of debt, Eutaw U candidates will have 4 years work experience, benefits, ESOP shares, and built up their retirement savings.

Eutaw U candidates **get paid** for on-the-job training while college students pay to be in the classroom.



Curriculum

The scope of knowledge and materials covered in Eutaw U is extensive. The curriculum was designed by a collection of Eutaw's best and most innovative employees with thousands of hours of construction experience with you, the candidate, in mind. We want you to feel prepared for anything you may encounter the moment you step onto a jobsite. The six-week course will be a combination of classroom instruction and certification, hands on lab experiences, site visits, simulator training, and more! Here are just a few of the topics covered.

General Construction Knowledge

- OSHA 10-Hour
- First Aid/CPR
- Trench & Excavation Safety
- Flagger Certification
- Utility Damage Prevention Plan
- Fall Protection Training
- General Construction Math
- Reading/Understanding Construction Plans/Specs and more

Bridge/Structure

- General Bridge Construction Knowledge
- Basic Carpentry Skills/Finishing Skills
- Forms Systems
- Rebar Installation
- Power Tools, PPE Requirements
- Concrete Tools and more

Earthwork

- General Earthwork Construction
- Soil Density and Compaction
- Equipment Inspection and Maintenance
- Eutaw Processes and Procedures and more

Utilities

- Basics of Utility Installation
- Utility Specific Tools
- Utility Specific Safety Concepts
- Pipe Laser
- Identifying Hazards and Conflicts and more

Survey

- General Survey Terminology
- GPS Basics
- Level and Grade Rod Training
- Tracking Field Notes and more



The opportunity to enlighten, encourage, and educate in the heavy civil construction industry.



POTENTIAL SALARY OPPORTUNITIES

TIMELINE*	EMPLOYMENT POSITION*	SALARY/YEAR*
Complete 6 Week Program	Laborer	\$42,000
1 Year of Employment	Skilled Laborer	\$51,000
2 Years of Employment	Equipment Operator	\$58,000
5 Years of Employment	Foreman	\$67,000 and a company truck
7 Years of Employment	Crew Superintendent	\$83,000 and a company truck
12 Years of Employment	Project Superintendent	\$117,500 and a company truck



*Timeline, employment position, and salaries are not guaranteed. These will be based on performance, productivity, and prevailing market rates.

Contact: Kevin Craft
kcraft@eutaw.us



www.eutawconstruction.com/eutaw-u/



100% Employee-Owned

Why put off your career for another four years? Start building your future now. To apply for the next Eutaw University Class, visit

<http://www.eutawconstruction.com/eutaw-u/>

The deadline for applications is **March 31.**

*Candidates will be selected based on their application, references, and an interview. Not all who apply will be accepted. Eutaw Construction Company, INC. is an equal opportunity employer.

